

A Project Managed By:

*Auric group*TM
— enriching lives, creating lifestyles —

RERA No.: RAJ/P/2018/867
Website: www.rera.rajasthan.gov.in

RIVERFRONT HOMES



Luxury Life - River Side

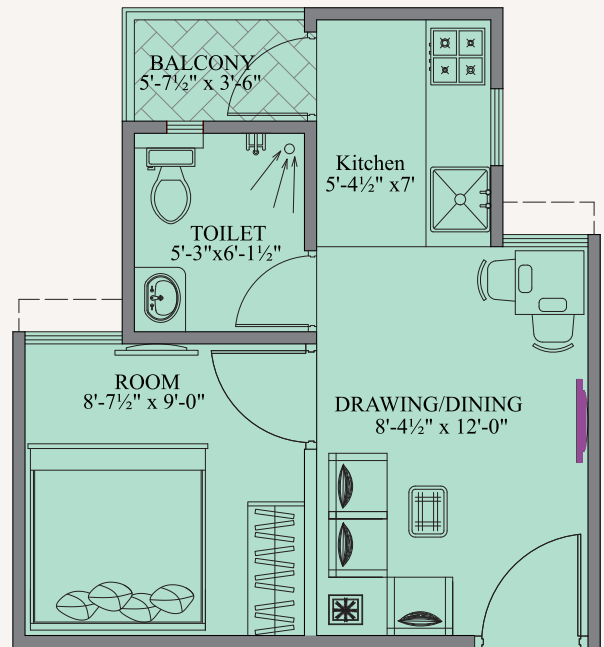




UNIT PLAN

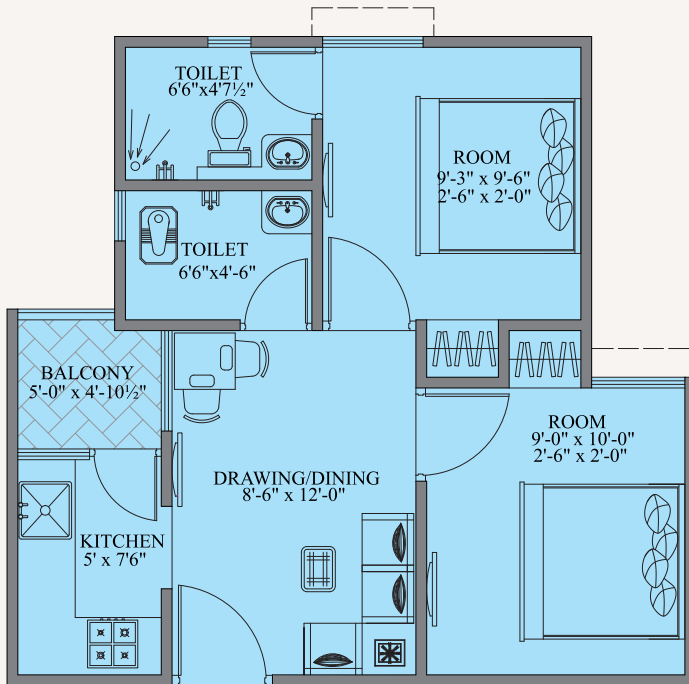
UNIT TYPE - 1 BHK

SALEABLE AREA	378.88 SQ.FT.
---------------	---------------



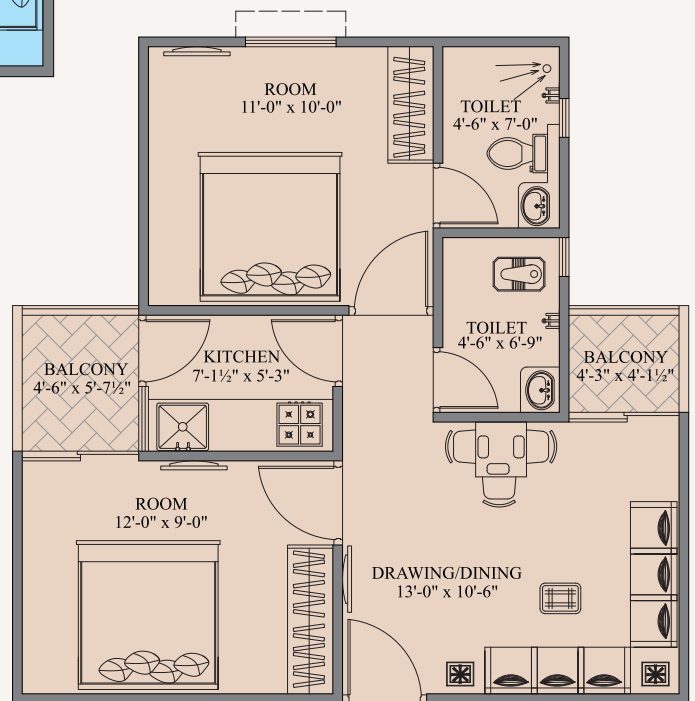
UNIT TYPE - 2 BHK

SALEABLE AREA	538.62 SQ.FT.
---------------	---------------

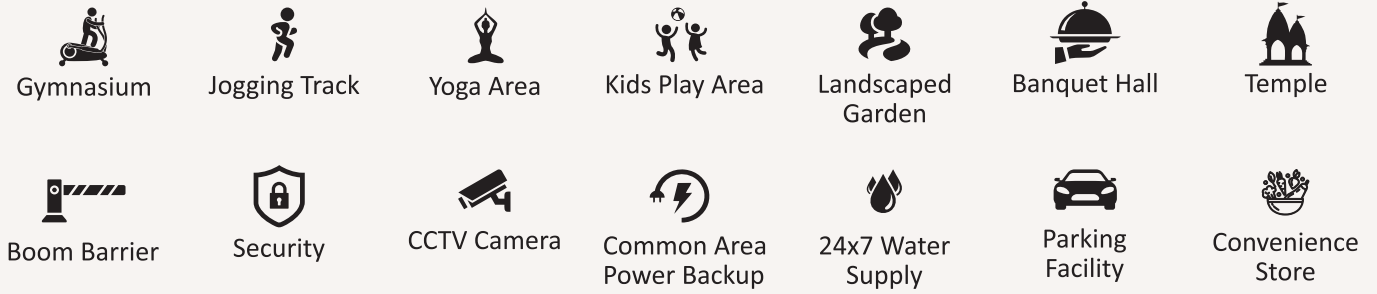


UNIT TYPE - 2 BHK

SALEABLE AREA	634.10 SQ.FT.
---------------	---------------



AMENITIES



LOCATION MAP



*Map not to scale

 **9057 988 988**

Corporate Office:

Ravi Surya Affordable Homes Pvt. Ltd.
Building No.1, 2nd Floor, Queens House,
Queens Road, Jaipur-302021

Phase Developer:



Disclaimer : Images shown above are representational, informative and are only indicative of the envisaged developments and the same are subject to change in actual. All intending purchaser/s are bound to inspect the plans and approvals and visit the project site and apprise themselves of all plans and approvals and other relevant information obtained from time to time from respective authority. The promoter holds no responsibility for its accuracy and shall not be liable to any intending purchaser or any one for the changes/ alterations/ improvements so made.